



aguabendita

SPRING / SUMMER 2025

Diez **VERANOS**

Spring / Summer 2025

This summer is a tapestry of dazzling memories, woven from 10 unique stories and 10 unforgettable experiences. Each one stands apart, yet together they create a mosaic of summer's daze.



THORN

Delivery #1



all my love
darling



VALLE TOP

17530

Adjustable fit - Handmade strap details
Eco-fabric - Placement print
XS - S - M - L - XL

Handmade details ECO fabric

Reversible Best-seller

\$140



TAMMY BOTTOM

17531

Placement print - Reversible - Handmade strap details
Adjustable fit - Eco-fabric - Coverage: Brazilian
XS - S - M - L - XL

Handmade details ECO fabric

Reversible Best-seller

\$120



Valle Top - Reversible



Tammy Bottom - Reversible



BRIETTA TOP

17512

Handmade details - Adjustable straps
Eco-fabric - Placement print - Removable pads
Adjustable fit - Embroidered for 5 hours
S - M - L - XL

Handmade details New silhouette ECO fabric

\$200



PENELOPE BOTTOM

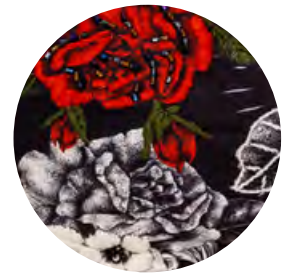
17514

High waist - Reversible - Eco-fabric
Placement print - Coverage: Latin
S - M - L - XL

Handmade details Reversible

Best-seller ECO fabric

\$130



Brietta Top - Handmade Details



Penelope Bottom - Reversible



LOLITA TOP

17513

Ring details - Adjustable fit
S - M - L - XL

\$95



ALEXIS BOTTOM

17516

Ring details - Adjustable fit
Coverage: Brazilian
S - M - L - XL

\$95



Lolita Top - Ring detail



Alexis Bottom - Ring Detail



ILU BOTTOM

17515

Low rise - Reversible - Eco-fabric
Placement print - Coverage: Full
S - M - L - XL

Reversible ECO fabric

\$120



Reversible



Lace-up Detail



Strap Detail

RUSSET ONE PIECE

17510

Lace-up side details - Placement print
Adjustable straps - Handmade strap details
Eco-fabric - Removable pads
Coverage: Brazilian
S - M - L - XL

Handmade details

New silhouette

Key item

ECO fabric

\$220



MARINE PAREO

17533

See-through - Mesh fabric - Placement print
Trim details - 94% polyester, 6% spandex
Measurements: 64.9" x 41.3" / 165 cm x 105 cm

U

Best-seller

\$150



See-through



Front Button Closure

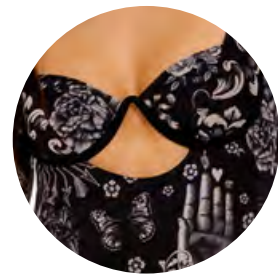
CHRISSY SHIRT

17532

Front button closure - 3/4 sleeve - Placement print - 46% viscose, 31% cotton, 23% linen
XS - S - M - L

Key item Best-seller

\$120



Cut-out Details

LUREX BODYSUIT

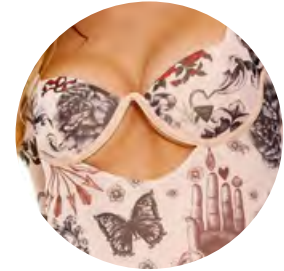
17718

Long sleeves - Underwire - Mesh fabric
Cut-out details - Gusset snap button closure
94% polyester, 6% spandex

S - M - L

Key item

\$200



Cut-out Details

LUREX BODYSUIT

17519

Long sleeves - Underwire - Mesh fabric
Cut-out details - Gusset snap button closure
94% polyester, 6% spandex

S - M - L

Key item

\$200



Machine Embroidered Details

ORY BODYSUIT

17520

Long sleeve- See-through - Mesh fabric
Handmade details - Machine embroidered
details - Gusset snap button closure
94% polyester, 6% spandex

S - M - L

\$200



ZARINA TOP

17719

Handmade macramé - Adjustable elastic straps
Back S-hook closure - 100% polyamide
S - M - L

Handmade details

New silhouette

Key item

\$150



DELFINA PAREO

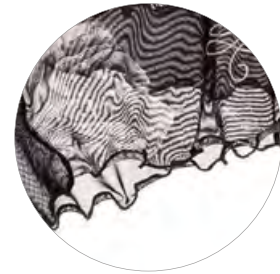
17522

Midi pareo - Trim Detail - Placement print
Adjustable lace - 94% polyester, 6% spandex
XS/S - M/L

New silhouette



Handmade Macrame



Delfina Pareo - Trim Detail

\$150



ZARINA TOP

17524

Handmade macramé - Adjustable elastic straps
Back S-hook closure - 100% polyamide
S - M - L

Handmade details

New silhouette

Key item

\$150



Handmade Macrame



Back S-Hook Closure



Rose Detail

GISELLE DRESS

17518

Maxi dress - Cut-out details - Open back - Rose back detail - 95% polyamide, 5% elastane
S - M - L

New silhouette

\$250



Machine Embroidered

TAFFY SHIRT

17521

Short sleeve - Machine embroidered details - Button Up - Seethrough - 100% Polyester
S - M - L

Key item New silhouette

\$210



Trim Details

ROBIN DRESS

17517

Maxi Dress - Long Sleeves - Placement Print
See-Through - Mesh Fabric - 94% Polyester
6% Spandex

S - M - L

\$230



Mesh Fabric

MONIKE PANTS

17529

Flared Boot - Elastic Waist - Mesh fabric -
See-Through - 8% Spandex 92% Polyester

S - M - L

\$180



Mesh Fabric



Machine embroidered details

AIDEN BAG

17523

Pocket - Zipper - Mesh Fabric
Machine embroidered details - 100% Polyester
Measurements: 36 x 19,5 cm

U

\$120



Heart Bag



Print Detail

LEVANA TOTE-BAG

17526

Foldable tote- bag - One main compartment
Top handle - Strap - Placement Print
100% Polyester - Measurements: 40 x 42 cm

U

New silhouette

\$50



Handmade Macrame

MINDY CHAIN

17534

Handmade Macrame
Lobster clasp - silver-tone hardware
U

Handmade details New silhouette



Back Pocket

CASSIUS TRUNKS

17525

Adjustable Fit - Side & Back Pockets
Elastic Waist - Trunk Length: 16.5" / 41cm
28 - 30 - 32 - 34 - 36 - 38

\$140



Metallic Logo





MERAKI

Delivery #1





BELLE TOP

17485

Placement Print - Strap Details - Adjustable Fit
S - M - L - XL

\$140



DAKOTA BOTTOM

17487

Strap Details - Placement Print
Coverage: Brazilian

S - M - L - XL

\$120



Belle Top - Strap Detail



Dakota Bottom - Strap Detail



BALENA TOP

17486

Underwired - Trim Details - Placement Print
Adjustable Straps - Back S-Hook Closure
S - M - L - XL

Best-seller

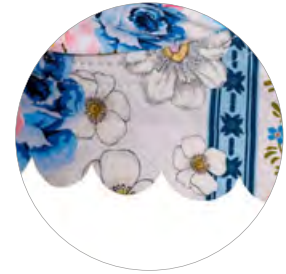


ALICIA BOTTOM

17488

Trim Details - High Waist
Placement Print - Coverage: Latin
S - M - L - XL

Best-seller



Belena Top - Trim Detail



Alicia Bottom - Trim Detail



Reversible

ILU BOTTOM

17489

Low Rise - Reversible
Placement Print - Coverage: Full Coverage
S - M - L - XL

Reversible

\$120



Reversible



Lace-up Side Details

MARIEL ONE PIECE

17484

Reversible - Handmade strap Details
Lace-up Side Details - Cut-out Details
Removable Pads - Adjustable Straps
Placement Print - Coverage: Full coverage
S - M - L - XL

Handmade details

Reversible

\$200



ZINNA PAREO

17496

Wrap Around - Placement Print - 100% Viscose
Measurement: 120 x 87 cm

U

Best-seller

\$150



Print Detail



SAM TUNIC

17490

Handmade Tassel Detail - Adjustable Fit
Twisted String - Placement Print
100% Viscose - Handmade details For 5-Hour

U

Handmade details

\$250



Print Details



Tassel Details



Machine Embroidered Details



Fabric Details

EMERALD DRESS

17491

Maxi Dress - Machine embroidered details
Adjustable Straps - Smocked Back
Machine embroidered Fabric - Zipper
Pleated Details - 100% Cotton

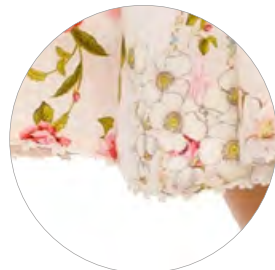
S - M - L

New silhouette

\$380



Smocked Back



Trim Details

KRISTEN DRESS

17492

Smocked Back - Zipper - Trim Detail
Pleated Details - 46% Viscose
31% Cotton 23% Linen

S - M - L

Best-seller

\$230



SWAN SHIRT

17493

Front Tie Closure - Machine embroidered details
Long Sleeve - Placement Print - 99% Cotton
1 % Elastane

XS/S - M/L

Key item New silhouette

\$230



MALAGA SHORTS

17494

Elastic Waist - Adjustable Fit - Side
Pockets Machine embroidered details
Machine embroidered Fabric

S - M - L

New silhouette

\$180



Swan Shirt - Front Tie Closure



Malaga Shorts - Machine Embroidered Details



SWAN SHIRT

18121

Front Tie Closure - Machine embroidered details
Machine embroidered Fabric - Long Sleeve
100% Cotton

XS/S - M/L

Key item New silhouette

\$230



CAROLINE PANTS

18122

Side Pockets - Machine embroidered Fabric
Adjustable Lace - 100% Cotton

S - M - L

New silhouette

\$220



Swan Shirt - Machine embroidered details



Caroline Pants - Fabric Details



ADAM TOWEL

17498

Double Sided - Placement Print - 92% Polyester
8% polyamide - Measurement: 145 x 78 cm

U

Reversible

\$70



DAN TRUNKS

17505

Elastic Waist - Adjustable Fit - Side and Back Pockets - Metallic Logo - Printed Brand Motifs
Placement Print - Trunk Length: 19"/ 47 cm

30 - 32 - 34 - 36 - 38

\$140



Back Pocket



Printed Brand Motif



Smocked Top



Ruffle Details

LEWIS ONE PIECE

17502

Adjustable fit - Ruffles Hem Details
Smocked Top - Placement print
02 - 04 - 06 - 08 - 10 - 12 - 14

\$80



Front Knot

CINDY ONE PIECE

17506

Front Knot - Long Sleeve - SPF 50
Cut-out Details - Placement Print
02 - 04 - 06 - 08 - 10 - 12 - 14

New silhouette

\$90



Ruffle Details

ALEIDA BIKINI

17501

Ruffle Details - Placement Print
02 - 04 - 06 - 08 - 10 - 12 - 14

\$80



Metallic Logo

LUKE TRUNKS

17504

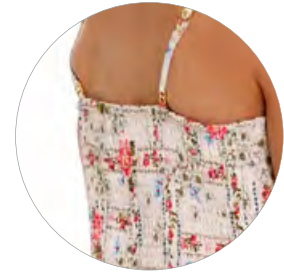
Elastic Waist - Adjustable Fit - Side & Back
Pockets - Metallic Logo - Printed Brand Motifs
Placement Print - Trunk Length: 13.5"/ 34.5cm

02 - 04 - 06 - 08 - 10 - 12 - 14

\$80



Printed Brand Motif



Smocked Back

NICOLLE DRESS

17503

Trim Details - Smocked Back
Adjustable Fit - 100% Polyester
02 - 04 - 06 - 08 - 10 - 12 - 14

New silhouette

\$110

AB Family



BELLE TOP & DAKOTA BOTTOM

17485 / 17487



ALEIDA BIKINI

17501



DAN TRUNKS

17505



LUKE TRUNKS

17504

