

aguabendita

RESORT 2026



# TREASURE HUNTER

RS

26

## A Collector of Stories

She's a woman who journeys across Colombia in search of rare treasures—not just to adorn her body, but to carry pieces of this vibrant country with her.

In hidden alleys and bustling markets, she uncovers objects that transform her: spices in a thousand colors, a silver necklace, a rug woven with centuries of history.

Her style is a fusion of cultures, a continuous adventure where the true treasures aren't the objects themselves, but the experiences and stories she gathers along the way.



DELIVERY #1



## AMBAR

This collection is a tribute to nature's resilience; its remarkable ability to adapt and transform in the face of extremes. Leaves, flowers, stems, mushrooms, and feathers merge to form new botanical species, even faces.

Rooted in surrealism, it blurs the line between reality and imagination, revealing beauty in the most unexpected places.



**LOLITA TOP**

19309

Adjustable fit - Handmade strap details  
Eco-Fabric Ruched details  
Handmade details: 7 hours and 30 minutes  
S - M - L - XL

Handmade details Best-seller  
Key item ECO fabric

**\$210**



**ALEGRIA BOTTOM**

19328

Adjustable fit - Ruched details - Strap Tip  
Eco- Fabric - Coverage: Latin  
S - M - L - XL

Handmade details Best-seller  
Key item ECO fabric

**\$125**



Lolita Top - Full embroidery



Alegria Bottom - Ruched Details



**CONGA ONE PIECE**

19308

Cut-out details - Ring details - Placement print  
Eco-Fabric - Adjustable straps - Coverage: Latin  
S - M - L - XL

New silhouette ECO fabric

**\$210**



Ring Details



Adjustable Straps



Trim Details



Mesh Details

### MEI ONE PIECE

19322

Long sleeves – Back zipper – Mesh details  
Placement print – Coverage: American

S – M – L – XL

Best-seller

\$210



Fabric Details

### KARLA PAREO

20466

Machine-embroidered fabric  
Adjustable fit – See-through – 100% Polyester

S – M – L

New silhouette

\$155



Trim Details

### MARINE PAREO

19311

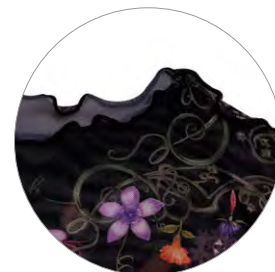
See-through – Mesh fabric – Placement print  
Trim details – 94% Polyester, 6% Spandex  
Measurements: 64.9" x 41.3" (165 cm x 105 cm)

U

Best-seller

Key item

\$145



Trim Details

### LEONA T-SHIRT

19326

Mesh fabric – Placement print  
Trim detail – 94% Polyester, 6% Elastane

XS – S – M – L

New silhouette

Key item

\$120



Print Detail

GEA T-SHIRT

19324

Placement print – Short sleeves – 100% Cotton

S – M – L

\$120



Thumbhole Cut-Out

ROBIN DRESS

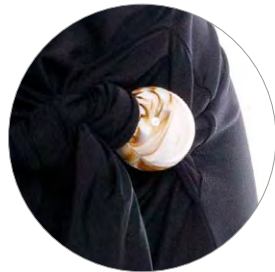
19312

Maxi dress – Long sleeves with thumbhole cut-out  
Placement print – See-through mesh sleeves  
Mesh fabric – 82% Polyester, 18% Elastane

S – M – L

Best-seller Key item

\$235



Stone with Marble-Like Detail

MELINA DRESS

19705

Maxi dress – Strapless neckline – Front slit detail  
Pull-on styling – Stone with marble-like detail  
Non-slip silicone – 78% Polyamide, 22% Elastane

S – M – L

New silhouette

\$250



Cut-Out Details



Liana Crop Top – Thumbhole Cut-Out

LIANA CROP TOP

19314

Allover print – Mesh fabric – Long sleeves  
Trim detail – Long sleeves with thumbhole cut-out  
94% Polyester, 6% Elastane

XS – S – M – L

New silhouette Key item

\$140



Brace Skirt – Mesh fabric

BRACE SKIRT

19317

Maxi skirt – Pull-on styling  
Mesh fabric – Allover print – Trim detail  
94% Polyester, 6% Spandex

XS – S – M – L

New silhouette Key item

\$200



### ALI SHIRT

19315

Placement print – Front button closure  
Short sleeves – 100% Cotton

S – M – L – XL

[New silhouette](#) [Key item](#)

**\$170**



### MALAGA BERMUDA SHORTS

19319

Elastic waist – Side and back pockets  
Placement print – 100% Cotton – Oversized

S – M – L – XL

[Key item](#)

**\$165**



Ali Shirt – Button Details



Malaga Shorts – Pocket Details



### KESHI SHIRT

20405

Front button closure  
Embroidered patch details – 100% Cotton

XS – S – M – L

[Key item](#)

**\$230**



### SERENA PANTS

19327

Embroidered patch details – Adjustable fit  
Elastic waist – Side and back pockets  
100% Cotton

S – M – L

[New silhouette](#) [Key item](#)

**\$215**



Keshi Shirt – Embroidered Details



Serena Pants – Back Pocket Detail



### VITTORIA SHIRT

19316

Placement print – Front button closure  
Short sleeves – 46% Viscose, 31% Cotton, 23% Linen

S – M – L

[New silhouette](#) [Key item](#)

**\$170**



### SERAPHINE PANTS

19320

Cargo pockets – Side pockets – Adjustable lace  
Elastic waist – Placement print – 100% Linen

S – M – L

[New silhouette](#) [Key item](#)

**\$215**



Vittoria Shirt – Button Details



Seraphine Pants – Adjustable lace



### NAKIA HOODIE

20406

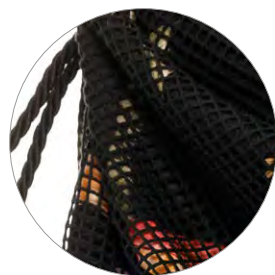
Embroidered patch details – Hood  
Adjustable hood lace – Front pocket  
Placement print – 100% Cotton

S – M – L

**\$200**



Embroidered Details



Mesh Fabric Details

### AIDEN BAG

19325

Pocket - Zipper - Mesh fabric - Strap details  
All over print - 100% Polyester  
Measurements: 36 x 19.5 cm

U

**\$120**



Metallic Logo



Adjustable Fit

### CASSIUS TRUNKS

19310

Adjustable fit - Side and back pockets  
Elastic waist - Metallic Logo - Placement print  
Trunk length: 16.5" / 41 cm

28 - 30 - 32 - 34 - 36 - 38

**\$135**





DELIVERY #1



## QUILT

This is a tribute to craftsmanship and creativity, where the art of the past finds new life in the present. A patchwork of memories, shaped by the footsteps of those who came before us.

Inspired by the tiles of old houses and the textures of layered textiles, we blend patchwork and mosaic, ancestral techniques that transform small, simple pieces into unexpected compositions of line and color.

Like Agua Bendita itself, patchwork endures through time as a testament to human ingenuity, proof of our ability to turn the ordinary into something extraordinary and artful.



**LUCILLE TOP**

19329

Handmade details - Removable straps  
Adjustable straps - Adjustable fit - Sidewire  
Front knot detail - Eco - Fabric - Placement print  
Handmade details: 12 hours

S - M - L - XL

Handmade details ECO fabric

Best-seller Key item

**\$210**



**AVY BOTTOM**

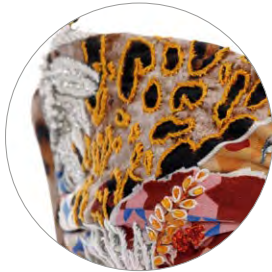
19330

Reversible - High-Rise - Eco-Fabric  
Placement print - Coverage: Brazilian

S - M - L - XL

Reversible Best-seller Key item ECO fabric

**\$120**



Lucille Top - Full embroidery



Avy Bottom - Reversible



**LOLITA TOP**

19355

Reversible - Handmade strap details  
Adjustable fit - Placement print - Eco- fabric  
XS - S - M - L - XL

Handmade details ECO fabric

Reversible Best-seller Key item

**\$120**



**ALEGRIA BOTTOM**

19356

Reversible - Handmade tip details  
Adjustable fit - Eco-Fabric  
Placement print - Coverage: Latin  
Handmade tip details: 80 minutes

XS - S - M - L - XL

Handmade details ECO fabric

Reversible Best-seller Key item

**\$125**



Lolita Top - Reversible



Alegria Bottom - Reversible



### MADELYN TOP

19711

Handmade strap details - Adjustable straps  
Underwired - Trim details - Back s-hook closure  
Shimmery fabric

S - M - L - XL

Best-seller

**\$110**



### LOLA BOTTOM

19712

Shimmery fabric - Coverage: Brazilian

S - M - L - XL

**\$95**



Madelyn Top - Trim Details



### KALI ONE PIECE

19715

Reversible - Adjustable fit - Handmade tip details  
Eco- Fabric - Placement print  
Coverage: Brazilian

S - M - L - XL

Handmade details

ECO fabric

Reversible

Best-seller

Key item

**\$210**



Reversible



Beaded Strap Tip Details



### TULIPA ONE PIECE

19331

Deep V-Cut - Open back - Adjustable straps  
Placement print - Eco-Fabric - Coverage: Latin

S - M - L - XL

ECO fabric

**\$220**



Print Details



Adjustable Straps



### ILU BOTTOM

19348

Low Rise - Reversible  
Eco-Fabric - Coverage: Full

S - M - L - XL

Reversible

Best-seller

ECO fabric

**\$120**



Reversible



Print Detail



MARINE PAREO

19344

Handmade tassel details – Placement print  
100% Viscose – Measurements: 64.9" x 41.3"  
(165 cm x 105 cm) – Handmade tassel: 60 minutes

U

Handmade details Best-seller Key item

\$15



Tassel Details



GABRIELLA DRESS

19714

Deep V-Cut – Adjustable front knot detail  
Smocked back – Adjustable straps – 100% Viscose

S – M – L

New silhouette

\$31



Front Knot Detail



Smocked Back



MEEG DRESS

19335

Maxi Dress – Adjustable straps – Cutout details  
Mesh fabric – Placement print – Pull-On styling  
Stone with marble-like detail – Partially lined  
94% Polyester, 6% Spandex

S – M – L

New silhouette

\$280



Stone with marble-like detail



See-Through



KOSIA CROP TOP

19706

Smocked back – Structured top – 100% Viscose

S – M – L

\$155



WINTER PANTS

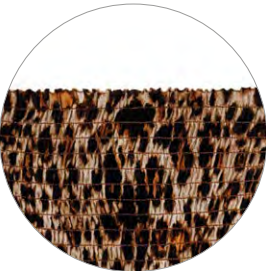
19707

Elastic waist – Side pockets  
Adjustable lace – Handmade tip Details  
94% Polyester, 6% Spandex

S – M – L

Key item

\$215



Kosia Crop Top – Smocked Back



Winter Pants – Handmade Tip Details



Button Details

ANASTASIA SHIRT

19340

Front Button closure – Long sleeves  
Placement print – Crinkled fabric  
98% Cotton, 2% Elastane

XS/S – M/L

Key item

\$230



Boh Crop Top – Fabric Details



Wesley Pants – Trim Details

BOH CROP TOP

19682

Handmade – Crochet fabric – Trim details  
Open back – Long bell sleeves – Sheer  
Adjustable style – 100% Cotton

S – M – L

New silhouette

Key item

Handmade details

\$210

WESLEY PANTS

19710

Handmade – Trim detail – Sheer – Internal panty  
Crochet fabric – 100% Cotton

S – M – L

New silhouette

Key item

Handmade details

\$235



Elastic Waist

WATTS SHORTS

19346

Elastic waist – Side & back pockets  
98% Cotton, 2% Elastane

XS – S – M – L

Key item

\$150



Boh Crop Top – Adjustable Style



Wesley Pants – Trim Details

BOH CROP TOP

19339

Handmade – Crochet fabric – Trim details  
Open back – Long bell sleeves – Sheer  
Adjustable style – 100% Cotton

S – M – L

New silhouette

Key item

Handmade details

\$210

WESLEY PANTS

19709

Trim Detail – Sheer – Internal panty  
Crochet fabric – 100% Cotton

S – M – L

New silhouette

Key item

Handmade details

\$235



**AXEL SHIRT**

19358

Crochet fabric  
Front button closure - 100% Cotton  
S - M - L

Best-seller

Handmade details

Key item

**\$210**



**CYPRUS SKIRT**

19357

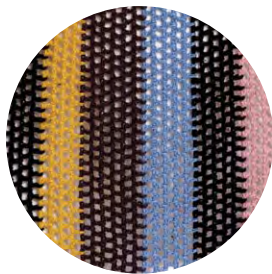
Maxi Skirt - Crochet fabric - Elastic waist  
Leg slit - 100% Cotton  
S - M - L

Best-seller

Handmade details

Key item

**\$235**



Axel Shirt - Fabric Details



Cyprus Skirt - Leg Slit



**PAPRIKA BAG**

19713

Large main compartment - Zipper closure  
Dual shoulder straps - Placement print  
Printed patches - 100% Polyester  
U

New silhouette

**\$140**



Printed Patches



Lace Details



**FALLON PANTS**

19708

Balloon Fit - Zip Fly with button closure  
Distressed details - Side & back pockets  
Intentional fading & Light whiskering  
100% Cotton

04 - 06 - 08 - 10

New silhouette

Key item

**\$250**



Button Details



Distressed Details



**JOE TRUNKS**

19352

Elastic waist - Adjustable fit - Side & back pocket  
Embroidered patch details - Metallic logo  
Placement print - Trunk length: 17" / 44 cm

28 - 30 - 32 - 34 - 36 - 38

Best-seller

**\$145**



Metallic Logo



Back Pocket



Front Knot

### CINDY ONE PIECE

19350

Front knot - Long sleeves - Cut-out details  
Eco-Fabric - Placement print

02 - 04 - 06 - 08 - 10

ECO fabric

**\$95**



Adjustable Straps

### KAIO DRESS

19342

Back zipper - Adjustable straps  
97% Polyester, 3% Elastane

02 - 04 - 06 - 08 - 10

**\$110**



Skirt Detail



Adjustable Fit



Back Pocket

### NICK TRUNKS

19351

Elastic waist - Adjustable fit  
Side & back pockets - Metallic logo  
Embroidered patch details - Placement print  
Trunk length: 13.5" / 34.5 cm

02 - 04 - 06 - 08 - 10 - 12 - 14

**\$85**



### DOLCE BIKINI

19349

Placement print - Adjustable back  
Eco-Fabric - Trim details

02 - 04 - 06 - 08 - 10 - 12 - 14

ECO fabric

**\$85**

**AB FAMILY**



**KALI  
ONE PIECE**  
19715



**CINDY  
ONE PIECE**  
19350



**JOE  
TRUNKS**  
19352



**NICK  
TRUNKS**  
19351

