



 **agua bendita**

Venus
CRUISE 2020



Venus

Under a Colombian Tropic sky, where green leaf's dance around a melodic tune, rainforest's fragrance overflow, light shines through each bush glowing and transforming life, illuminating her soul and path. . Venus, a gifted, mighty and perceptive woman with the desire of discovering new paths that intersect between the sea and jungle.

A true madame in everything she does, with such grace, charm and beauty - while being faithful to her culture, holding close her origins and having a strong voice. Being an empowered & eternal feminine lady, Venus knows her purpose in life, shields the environment and praises it by worshipping nature's floret maximalism and layers which take center stage in her life.

Bringing together evergreen textures, mixed and matched prints, and merged silhouettes, Venus represents worldwide historic and present memorable women who are well known for their courage, not being startled towards expressing her opinion and defending anything in which they believed in.





LOLITA TOP 5186



GEORGINA TOP - 5182 . AMAIA SKIRT - 5207

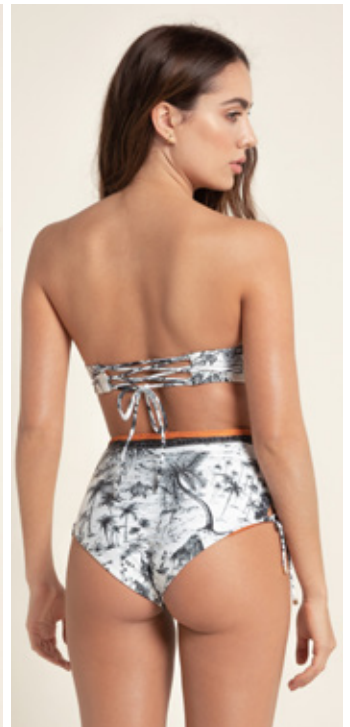
Makera

MAKARE
HATSHEPSUT

A fine pattern that features black and white landscape scenes and floral motifs striking the right maximalism note while backing women's mark in various fields across the continent of Africa. Their stories served to inspire future generations.



· handmade detailing ·
LOLITA TOP - 5188 -SMLXL
ALEGRÍA BOTTOM - 5189 -SMLXL - LF



· handmade detailing ·
BRUNA TOP - 5197 -SMLXL
HOPE BOTTOM - 5198 -SMLXL - LF



· handmade detailing ·
SANDY ONE PIECE
5196 - SMLXL





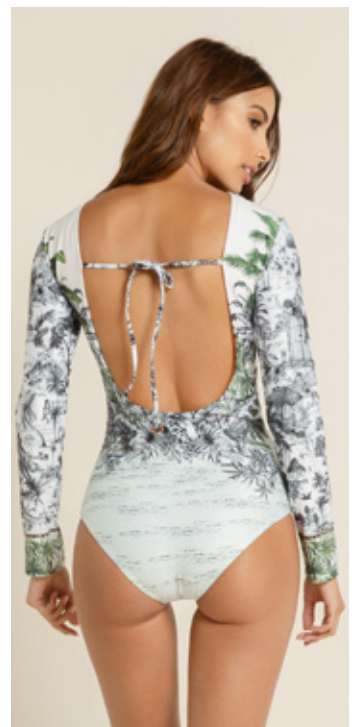
GRACE TOP - 5190 -SMLXL



MILA BOTTOM - 5191 - SMLXL - LF



· handmade detailing ·
GEORGINA TOP - 5182 - SMLXL
ZOE BOTTOM - 5183 -SMLXL - AF

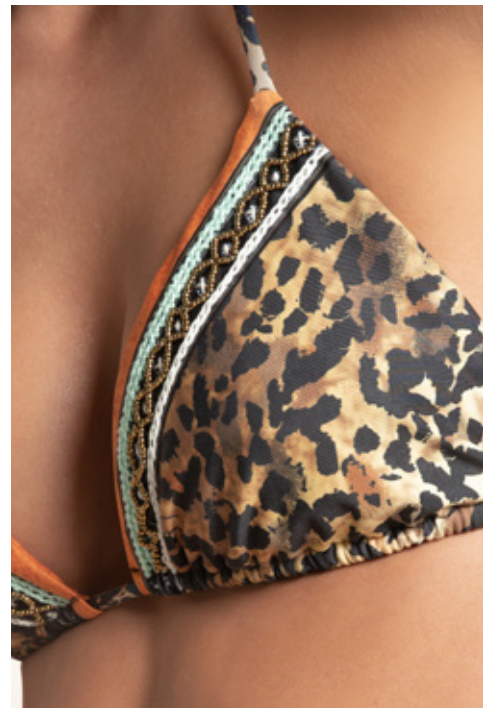
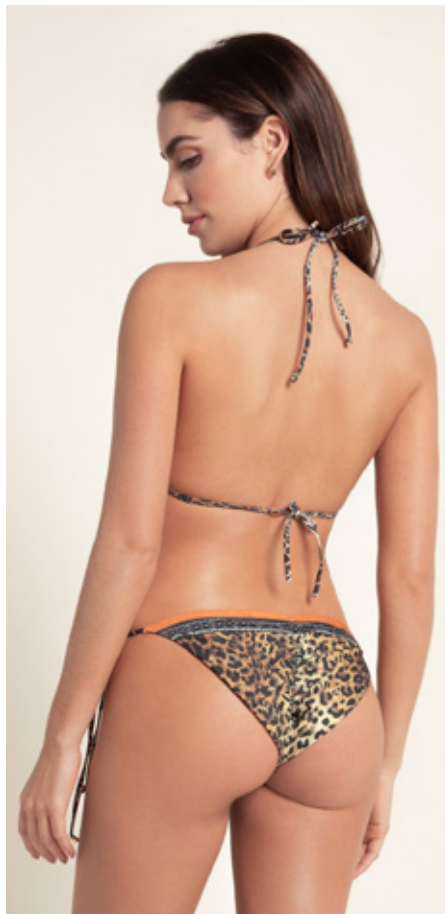


CLARA ONE PIECE - 5199 -SMLXL





FLORENTINA ONE PIECE 5200

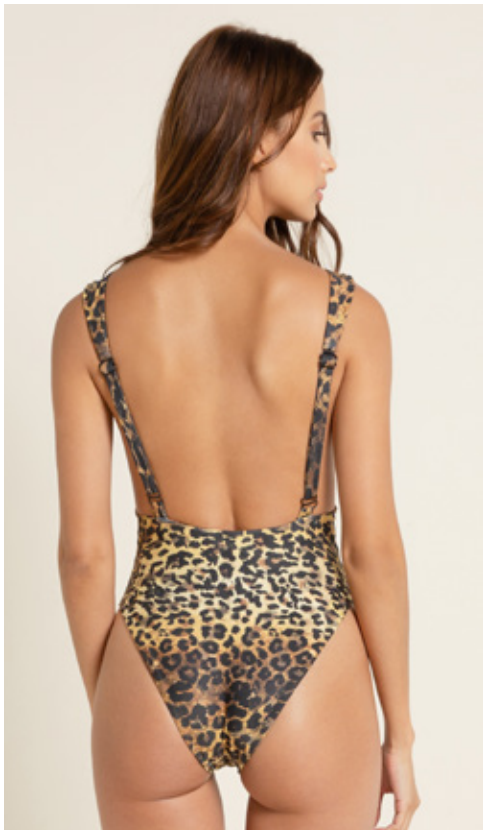


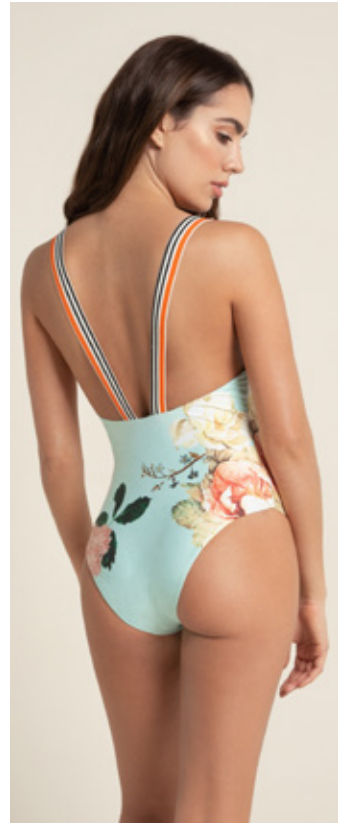
· handmade detailing ·

LOLITA TOP - 5186 -SMLXL
ALEGRÍA BOTTOM -5187-SMLXL-LF



FLORENTINA ONE PIECE
5200 -SMLXL





RAFAELA TOP - 5192 -SMLXL
LOLA BOTTOM - 5193 - SMLXL - BF

CIARA ONE PIECE - 5217 - SMLXL



LEXI KERCHIEF
5201 - ONE SIZE



CIARA ONE PIECE - 5217

RAFAELA TOP - 5192 LOLA BOTTOM - 5193



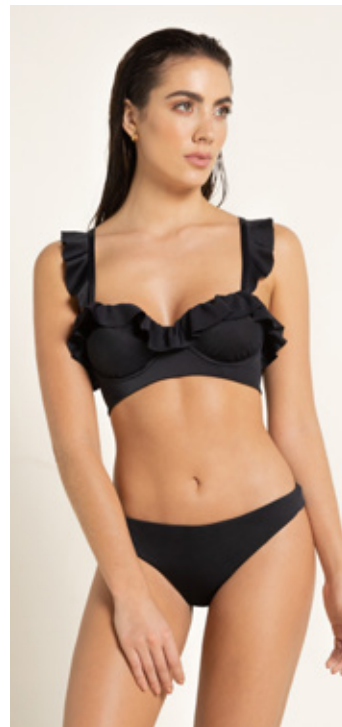
NICOLETTE ONE PIECE - 5557



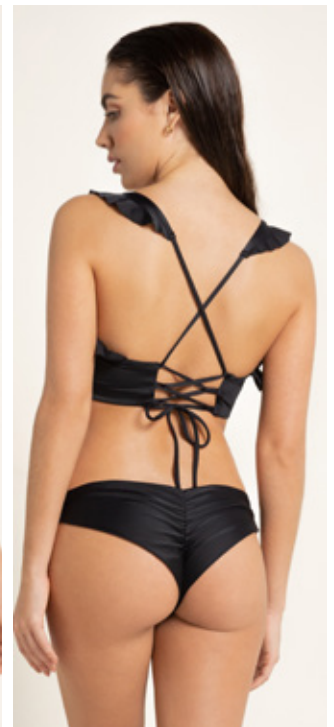
CALISTA TOP - 5558 - SMLXL
ISABELLA BOTTOM - 5559
SMLXL - LF



NICOLETTE ONE PIECE - 5557 - SMLXL



MARGOT TOP - 5560 -SMLXL
LOLA BOTTOM - 5561 -SMLXL - BF





MARINE PAREO 5205 - ONE SIZE



KATE TUNIC 5202 - ONE SIZE



SAM TUNIC - 5203 - ONE SIZE





ANGIE SHIRT - 5206 - SML
AMAIA SKIRT - 5207 - SML



NATURALIA DRESS - 5208 - SML



AUGUST

ROSIE TOP - 5218 PENÉLOPE BOTTOM - 5214 SANDY ONE PIECE - 5227



FRIDA KAHLO

Floret

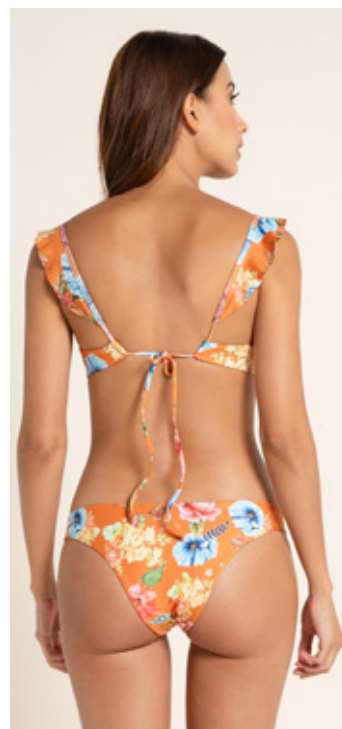
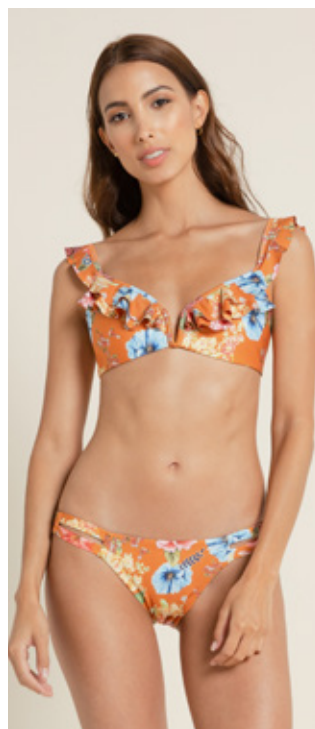
Recognizing nature as the ultimate expression of wisdom and love by granting a tribute to Mexican artist, Frida Kahlo. Loving life, its colors and the different tones that it has to offer expressed in printed flowers.





· reversible ·

ROSIE TOP - 5218 - SMLXL
ALEGRÍA BOTTOM -5212-SMLXL- LF



SANDY ONE PIECE - 5227 -SMLXL

CAMILA TOP - 5223 -SMLXL
POLLY BOTTOM - 5224 -SMLXL - BF





EMILY TOP - 5211 -SMLXL

ZOE BOTTOM - 5226 -SMLXL - AF



handmade detailing · reversible bottom

MIA TOP - 5220 - SMLXL

PENÉLOPE BOTTOM
5214 - SMLXL - LF

SUSAN TOP - 5574 PENELOPE BOTTOM - 5575



KAREN DRESS - 5231



NICOLETTE ONE PIECE - 5576 - SMLXL



SUSAN TOP - 5574 - SMLXL
PENELOPE BOTTOM - 5575 - SMLXL- BF



SHARON TOP - 5577 - SMLXL
RACHEL BOTTOM
5578 -SMLXL - BF



MARINE PAREO - 5229 - ONE SIZE



KAREN DRESS - 5231 - SML



ANGIE SHIRT - 5232 - SML

AMAIA SKIRT - 5235 - SML



SAM TUNIC - 5228 - ONE SIZE





SAM TUNIC - 5228 **SANDY** ONE PIECE - 5227



CLEO OVERALL - 5236



CLEO OVERALL - 5236 -SML





JADE PANTS - 5262

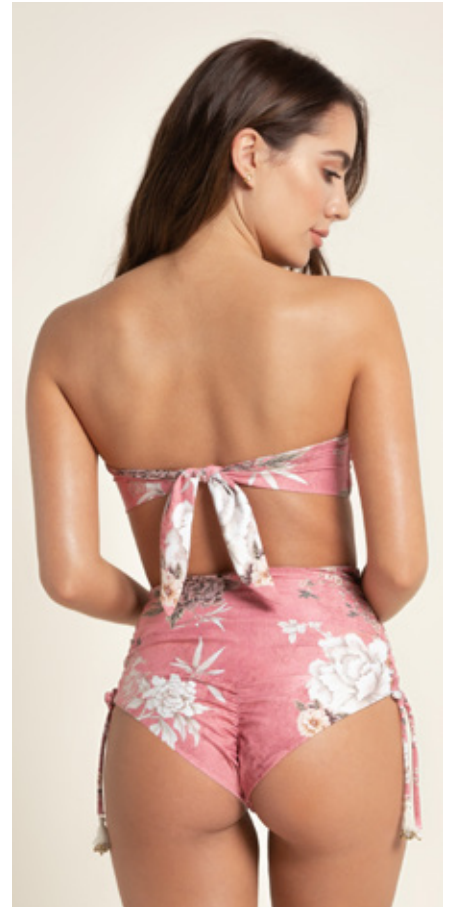
AUGUST
Madame
story

HANAE MORI

Cherry Blossoms hues stand beside Japanese madame, Hanae Mori's exquisite garments of the highest possible quality, delicate handmade details, wide-ranging styles, including cover ups patterned with flowers and birds.



LUCILLE TOP - 5237 HOPE BOTTOM - 5238



· reversible bottom ·

LUCILLE TOP - 5237 -SMLXL
HOPE BOTTOM - 5238 -SMLXL - LF



MIA TOP - 5250 -SMLXL
MILA BOTTOM - 5251 -SMLXL - LF

SPENCER TOP - 5244 -SMLXL
POLLY BOTTOM - 5245 -SMLXL - BF



· handmade detailing ·

STEPHANIE ONE PIECE
5254 -SMLXL



· reversible bottom ·

CAMILA TOP - 5241 -SMLXL
LOLA BOTTOM - 5242 -SMLXL- BF





EMMA BOTTOM - 5242

LOLITA TOP - 5241



· reversible bottom ·

SUSAN TOP - 5237 -SMLXL
ZOE BOTTOM - 5238 -SMLXL - AF



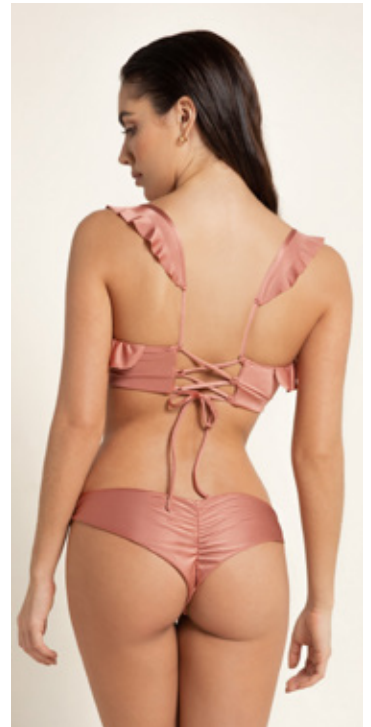
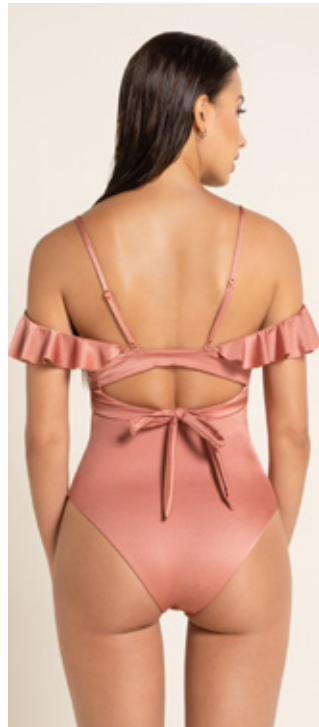
· handmade detailing ·

LOLITA TOP - 5246 -SMLXL
EMMA BOTTOM - 5247 -SMLXL- BF





CALISTA TOP - 5567 -SMLXL
ISABELLA BOTTOM - 5568
SMLXL - LF



ILONA ONE PIECE - 5563 -SMLXL

MARGOT TOP - 5565 -SMLXL
LOLA BOTTOM - 5566 -SMLXL - BF



ISABELLA BOTTOM - 5568

CALISTA TOP - 5567



MARINE PAREO - 5263 - ONE SIZE



CORA TUNIC - 5255 - ONE SIZE





LARISSA ROMPER - 5256 - SML



VANIA DRESS - 5260 -SML



JADE PANTS - 5262 - SML



IRENE TOP - 5440 CORINNA BOTTOM - 5441

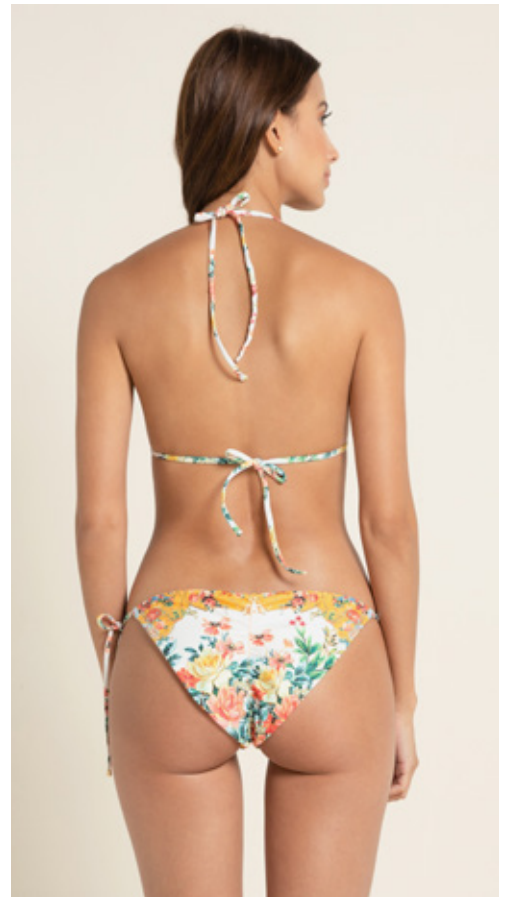


SANDY ONE PIECE - 5442

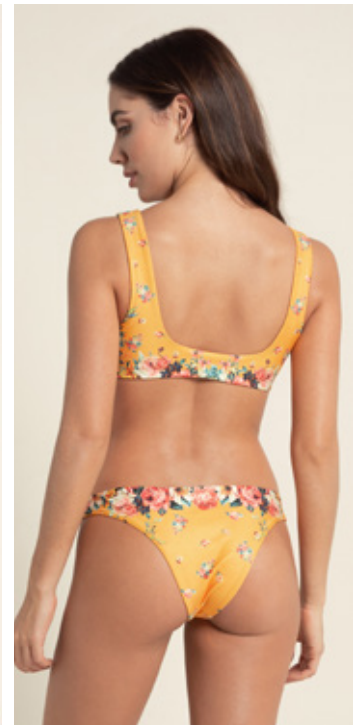
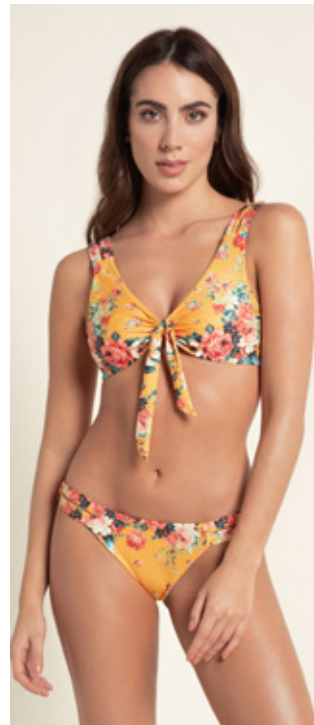
Gypsy

LOLA FLORES

An ornamental, folkloric style taking the form of flower stalks and buds, vine tendrils and other dainty natural objects infused with a powerfully rhythmic and solid gypsy force.



· reversible ·
LOLITA TOP - 5434 - SMLXL
ALEGRÍA BOTTOM
5435 - SMLXL - LF



IRENE TOP - 5440 -SMLXL
CORINNA BOTTOM - 5441 - SMLXL - BF

GRACE TOP - 5438 - SMLXL
POLLY BOTTOM - 5439 - SMLXL - BF



ABIGAIL ONE PIECE - 5443 - SMLXL



SANDY ONE PIECE - 5442 - SMLXL



· reversible bottom ·

CELIA TOP - 5252 - SMLXL

HOPE BOTTOM - 5253 - SMLXL- LF

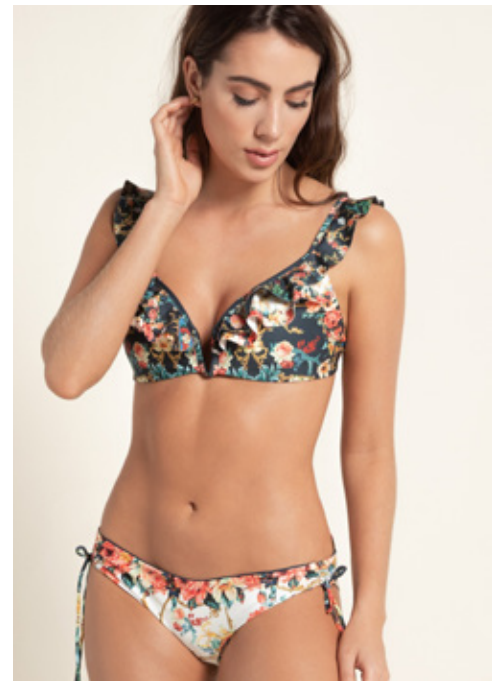




handmade detailing · reversible bottom

LISA TOP - 5436 -SMLXL

LOLA BOTTOM - 5437 -SMLXL - BF



· reversible bottom ·

CAMILA TOP - 5444 -SMLXL
ZOE BOTTOM - 5445 -SMLXL- AF





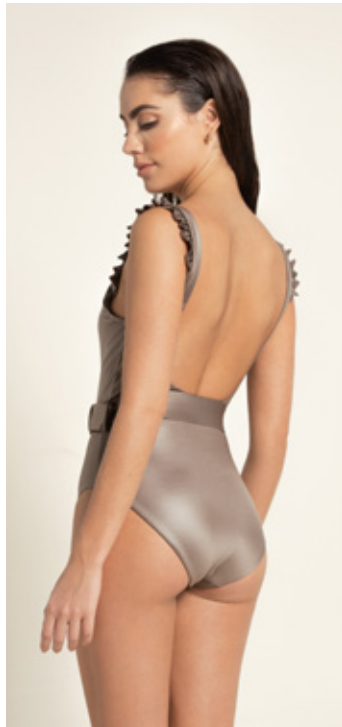
CAMILA TOP - 5444 ZOE BOTTOM - 5445



ELLIS ONE PIECE - 5617 - SMLXL



NICOLETTE ONE PIECE - 5616 - SMLXL



CALISTA TOP - 5614 - SMLXL
ISABELLA BOTTOM - 5615 -SMLXL - BF





HERBARIUM DRESS - 5449 -SML



MALVA TOP - 5447 - SML

AMAIA SKIRT - 5448 - SML





MALVA TOP - 5447 - S/M/L **AMAIA SKIRT - 5448 - S/M/L**



MARINE PAREO - 5446 - ONE SIZE



KATTIE TUNIC - 5456 - ONE SIZE





CAMILLE DRESS - 5458 - SML



DEMI OVERALL - 5455



· handmade detailing ·
DEMI OVERALL - 5455 -SML

SEPTEMBER



NATURALIA DRESS - 5520

AGNES ARBOR

When Magnolia's sweet fragrance fills the air and stunning evergreen blooms amidst white summer flowers, unique leaf shapes and plant forms followed by yellow fruits and petal-like segments.

Evergreen



FLORENTINA ONE PIECE - 5507

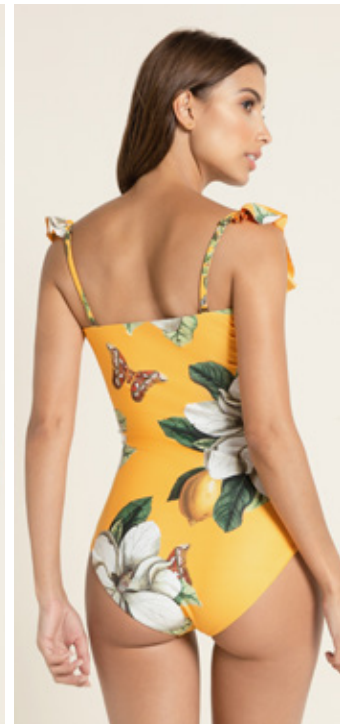
EVERGREEN STORY



· reversible bottom ·

THEA TOP - 5509 - SMLXL

LOLA BOTTOM - 5510
SMLXL - BF



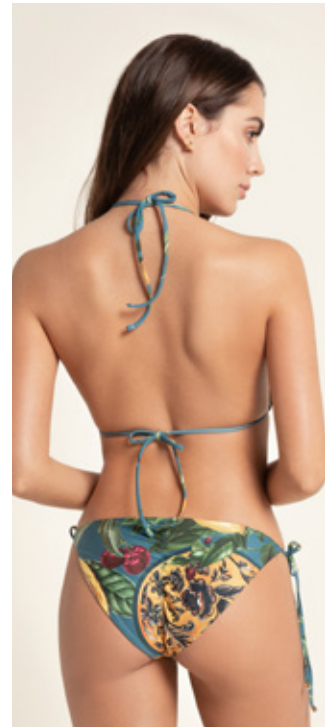
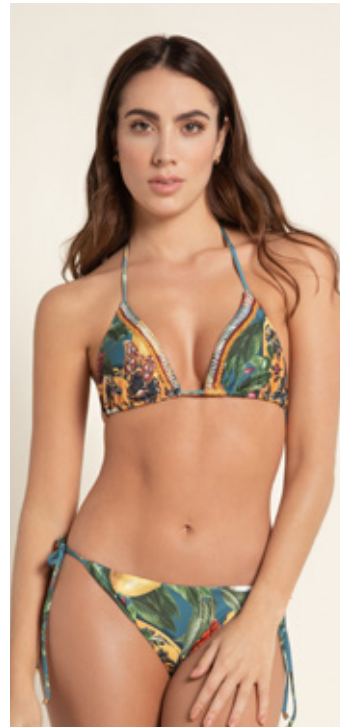
MEGAN TOP - 5513 - SMLXL
POLLY BOTTOM - 5514 - SMLXL - BF

NATIVA ONE PIECE - 5508 - SMLXL

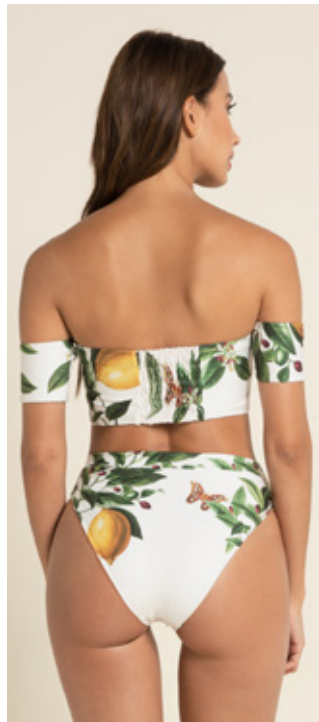




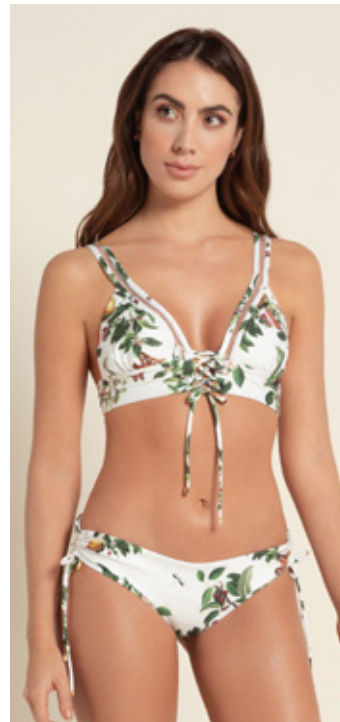
FLORENTINA ONE PIECE - 5507 - SMLXL



· handmade detailing ·
LOLITA TOP - 5511 - SMLXL
ALEGRÍA BOTTOM - 5512 - SMLXL - LF



CELIA TOP - 5503 - SMLXL
PENELOPE BOTTOM - 5504 - SMLXL - LF



MIA TOP - 5505 - SMLXL
ZOE BOTTOM - 5506 - SMLXL - AF







THEA TOP - 5509 LOLA BOTTOM - 5510



ELLIS ONE PIECE - 5589



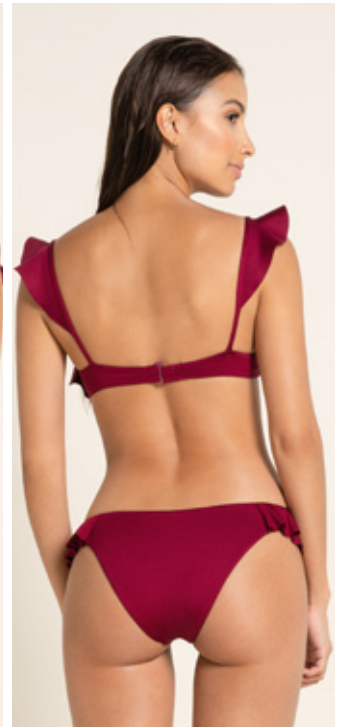
ELLIS ONE PIECE - 5589 - SMLXL



NICOLETTE ONE PIECE - 5586 - SMLXL



SHARON TOP - 5584 - SMLXL
RACHEL BOTTOM - 5585 -SMLXL - BF





NICOLETTE ONE PIECE - 5572 - SMLXL

ELLIS ONE PIECE - 5569 - SMLXL



SUSAN TOP - 5570 - SMLXL
PENELOPE BOTTOM - 5571
SMLXL- BF



EMILIA DRESS - 5517 -SML



MARIANA TOP - 5518 -SML
SOFIA SKIRT - 5523 -SML

MARIANA TOP - 5518 **SOFIA** SKIRT - 5523





MARINE PAREO - 5515 - ONE SIZE

FAITH DRESS - 5522 - SML





LARISSA ROMPER - 5521 - SML



LEXI KERCHIEF
5516 - ONE SIZE



ISABELLE TUNIC - 5519 - ONE SIZE





NATURALIA DRESS - 5520 -SML





EMMA BOTTOM - 5409

LOLITA TOP - 5408



MIA TOP - 5416 ZOE BOTTOM - 5412

Astral

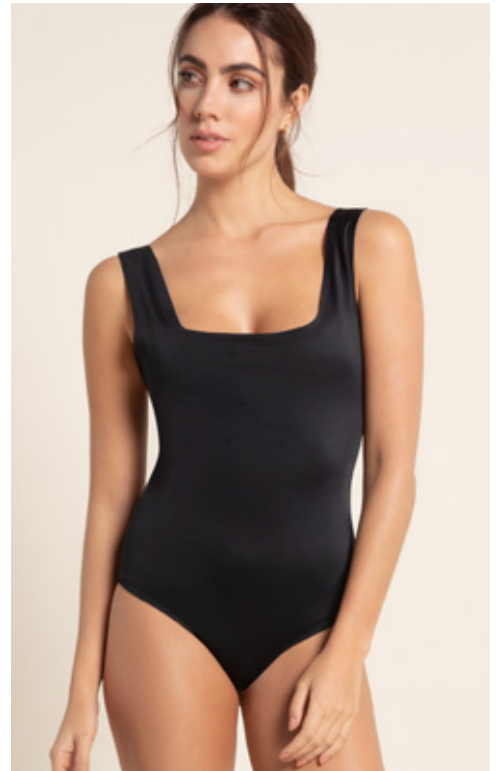
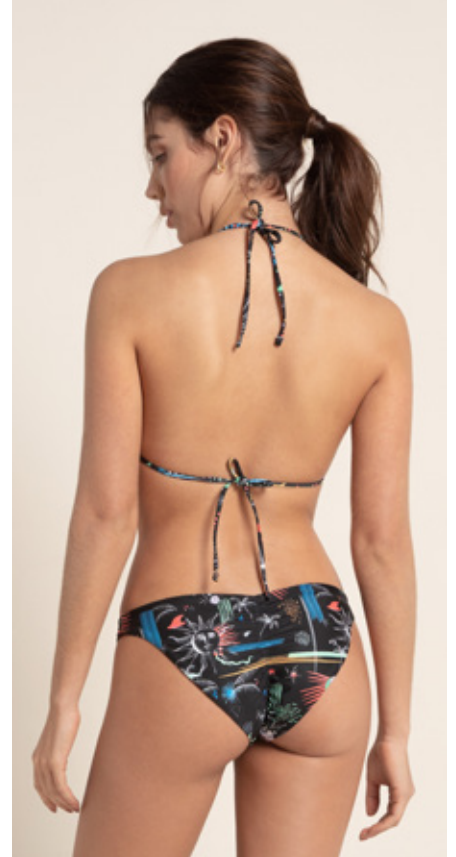
**HENRIETTA
SWAN LEAVITT**

Navigating the oceans all along praising the sun, moon and vast array of stars that have a consistent brightness no matter where they are located at night and day generating life on Earth.



· handmade detailing ·

LOLITA TOP - 5408 - SMLXL
EMMA BOTTOM - 5409 - SMLXL - LF



· reversible ·

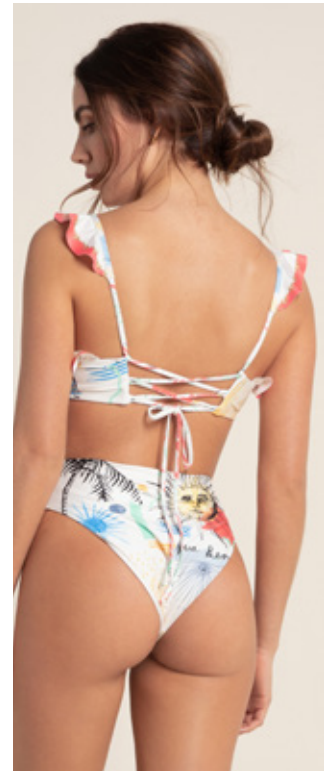
TINA ONE PIECE - 5415 - SMLXL



· reversible bottom ·

MIA TOP - 5416 - SMLXL

ZOE BOTTOM - 5412 - SMLXL - AF



CELIA TOP - 5413 - SMLXL
LOLA BOTTOM - 5414 - SMLXL - BF



MARGOT TOP - 5410 - SMLXL
PENELOPE BOTTOM - 5417 - SMLXL - BF





SHARON TOP - 5580 - SMLXL
RACHEL BOTTOM - 5581 - SMLXL - AF



CALISTA TOP - 5582 -SMLXL
ISABELLA BOTTOM - 5583 -SMLXL - BF



NICOLETTE ONE PIECE
5579 - SMLXL



SHARON TOP - 5580 RACHEL BOTTOM - 5581



MARINE PAREO - 5418 - ONE SIZE

SARAH BAG - 5659





HERBARIUM DRESS - 5425 - SML

MARGOT TOP - 5410 **PENELOPE** BOTTOM - 5417







CRYSTAL SHIRT - 5421 - SML



JUANA TUNIC - 5419 - ONE SIZE





PASIFLORA TOP - 5423 - SML
TROPIC SKIRT - 5424 - SML



PASIFLORA TOP - 5423

TROPIC SKIRT - 5424





JOSIE ROMPER - 5426



· handmade detailing ·
JOSIE ROMPER - 5426 -SML

FLORENTINA ONE PIECE - 5662

OCTOBER

GRACE O'MALLEY

Within the boundaries of the so-called 'Golden Age' of piracy tracing legendary escapades through magnificent boats.

Olympia

MARGOT TOP - 5667

ALICIA BOTTOM - 5668





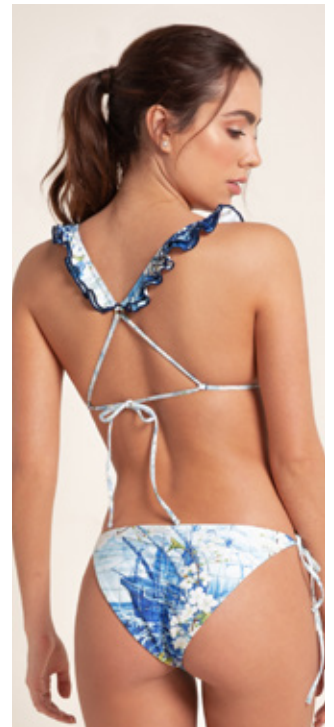
FLORENTINA ONE PIECE - 5662 - SMLXL



RAFAELLA TOP - 5663 - SMLXL
LOLA BOTTOM - 5664 - SMLXL - BF



LUCILLE TOP - 5665 - SMLXL
POLLY BOTTOM - 5666 - SMLXL - BF

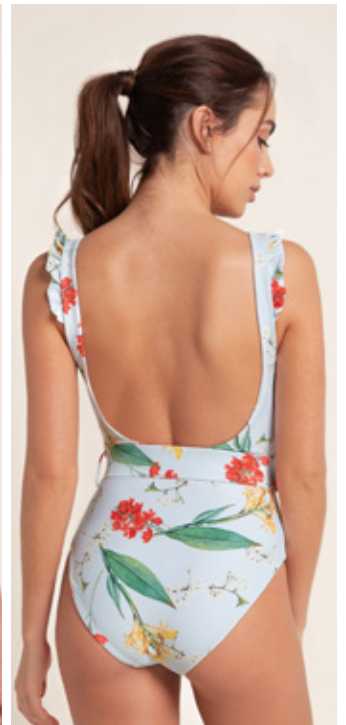


ROSIE TOP - 5669 - SMLXL
ALEGRÍA BOTTOM - 5670 - SMLXL - LF





MARGOT TOP - 5667 - SMLXL
ALICIA BOTTOM - 5668
SMLXL - LF



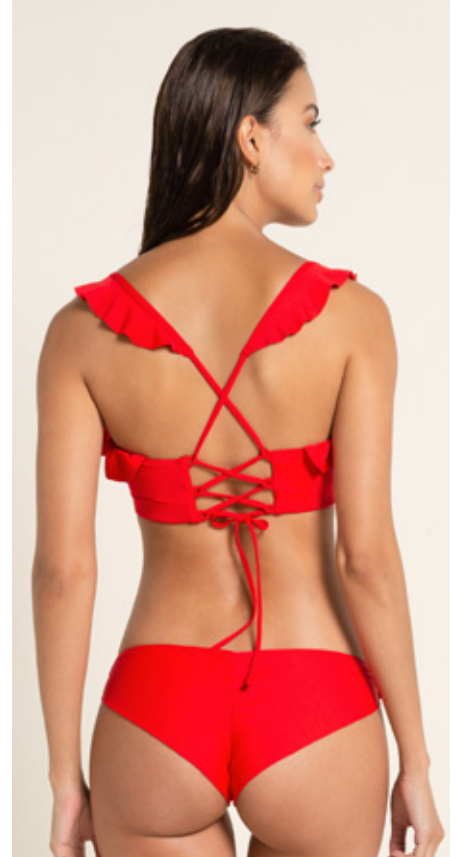
SUSAN TOP - 5734 - SMLXL
PENELOPE BOTTOM - 5735 - SMLXL - LF



NICOLETTE ONE PIECE - 5671 - SMLXL



CALISTA TOP - 5587 ISABELLA BOTTOM - 5620



MARGOT TOP - 5621 - SMLXL
LOLA BOTTOM - 5622 - SMLXL - BF



SUSAN TOP - 5619 - SMLXL
PENELOPE BOTTOM - 5588 - SMLXL - LF

CALISTA TOP - 5587 - SMLXL
ISABELLA BOTTOM - 5620 - SMLXL - LF



MARINE PAREO - 5672 - ONE SIZE



SAM TUNIC - 5677 - ONE SIZE





XENIA DRESS - 5674 - SML



MALVA TOP - 5675
JADE PANT - 5676



MALVA TOP - 5675 - SML

JADE PANT - 5676 - SML





LYLA PANT - 5736 - SML



MARIANA TOP - 5673 - SML
ADISSON SHORT - 5678 - SML

Mau

KA'AHUMANU

A commemoration of Hawaii's folklore, coasts heritage and ancestral rhythms. Holding people's traditions and portraying fruits botanical diverse characteristics as a focal point in women equal rights.

OCTOBER



ALICIA BOTTOM - 5680

EMILY TOP - 5679

GXL 37R
COLOMBIA



LUCILLE TOP - 5685 ZOE BOTTOM - 5686

MAUI STORY



EMILY TOP - 5679 - SMLXL
ALICIA BOTTOM - 5680 -SMLXL - LF



MEGAN TOP - 5683 - SMLXL
POLLY BOTTOM - 5684 - SMLXL - BF



ROSIE TOP - 5681 - SMLXL
LOLA BOTTOM - 5682
SMLXL - BF

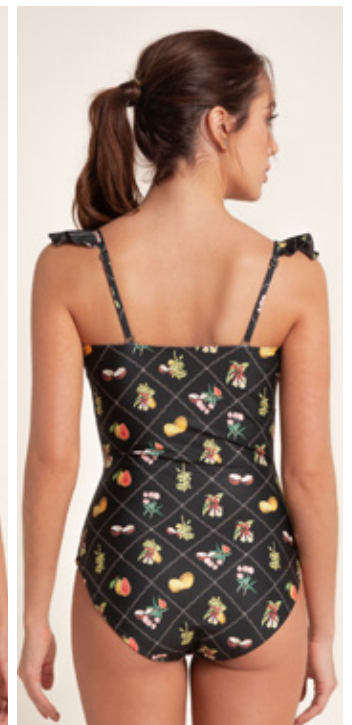
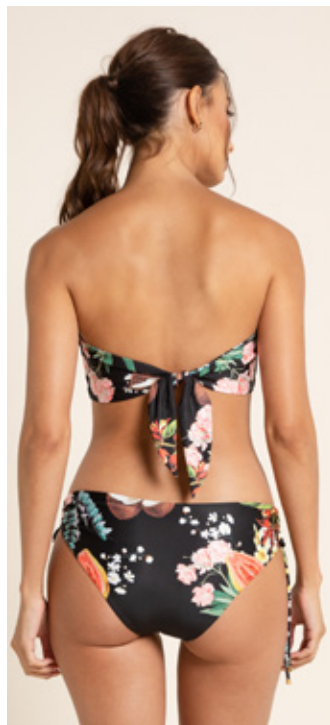




· handmade detailing ·

LOLITA TOP - 5688 - SMLXL

ALEGRÍA BOTTOM -5689-SMLXL- BF



LUCILLE TOP - 5685 - SMLXL
ZOE BOTTOM - 5686 - SMLXL - AF

NATIVA ONE PIECE - 5687 - SMLXL





MARINE PAREO - 5695 - ONE SIZE



JUANA TUNIC - 5690 - ONE SIZE





KAREN DRESS - 5737 - SML



CLARK ROMPER - 5691



CLARK ROMPER - 5691 - SML



ADISSON SHORT - 5738 - SML



MARINE PAREO - 5695

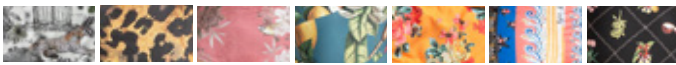
ROSIE TOP - 5681

TOPS

LOLITA



PRINTS _____

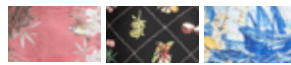


makera madame evergreen gypsy astral maui

LUCILLE



PRINTS _____



madame maui olympia

CAMILA



PRINTS _____

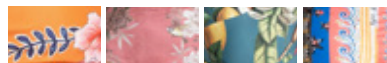


floret madame gypsy

MIA



PRINTS _____



floret madame evergreen astral

SPENCER



PRINTS _____



madame

SUSAN



PRINTS _____



madame olympia verde navy rojo

BRUNA



PRINTS _____



makera

GEORGINA



PRINTS _____

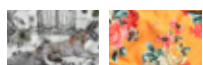


makera

GRACE



PRINTS _____

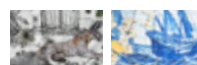


makera gypsy

RAFAELLA



PRINTS _____



makera olympia

ROSIE



PRINTS _____

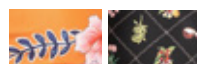


flore maui olympia

EMILY



PRINTS _____



flore maui

IRENE



PRINTS _____



gypsy

CELIA



PRINTS _____



evergreen gypsy astral

LISA



PRINTS _____

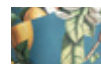


gypsy

THEA



PRINTS _____



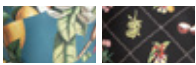
evergreen

TOPS

MEGAN



PRINTS _____



evergreen maui

CALISTA



PRINTS _____



negro rosa tan crema rojo

BOTTOM FITS

LOLA/ BRAZILIAN FIT



PRINTS _____

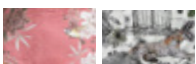


madame makera evergreen gypsy astral maui olympia

MILA/ LATIN FIT



PRINTS _____



madame makera

MARGOT



PRINTS _____

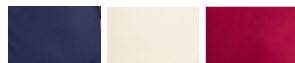


olympia astral rojo negro rosa

SHARON



PRINTS _____



navy crema burgundy

HOPE/ LATIN FIT



PRINTS _____

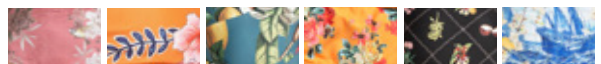


madame makera gypsy

POLLY/ BRAZILIAN FIT



PRINTS _____



madame floret evergreen gypsy maui olympia

EMMA/ LATIN FIT



PRINTS _____

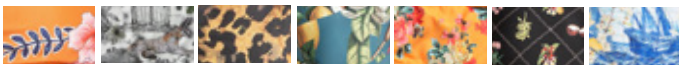


madame astral

ALEGRÍA/ LATIN FIT



PRINTS _____



floret makera evergreen gypsy maui olympia

CORINNA/ BRAZILIAN FIT



PRINTS _____



gypsy

ISABELLA



PRINTS _____

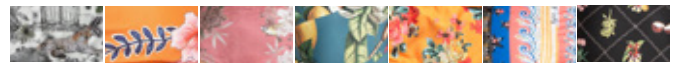


negro rosa tan crema rojo

ZOE/ AMERICAN FIT



PRINTS _____



makera floret madame evergreen gypsy astral maui

PENELOPE/ LATIN FIT



PRINTS _____

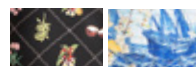


floret evergreen astral olympia verde navy rojo

ALICIA/ LATIN FIT



PRINTS _____

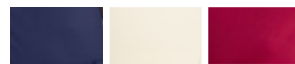


maui olympia

RACHEL



PRINTS _____



navy crema burgundy

ONE PIECES

STEPHANIE



PRINTS



madame

SANDY



PRINTS



makera

gypsy

flore

CLARA



PRINTS



makera

CIARA



PRINTS



makera

ABIGAIL



PRINTS

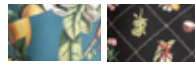


gypsy

NATIVA



PRINTS



evergreen

maui

FLORENTINA



PRINTS



makera evergreen olympia

TINA



PRINTS



astral

NICOLETTE



PRINTS



olympia negro tan navy crema burgundy verde

ILONA



PRINTS



rosa

ELLIS



PRINTS



tan burgundy verde



HEAD QUARTERS

P. (574) 6051846
Medellín - Colombia

**NORTH AMERICA & CARIBBEAN
VALENTINA CORREA**

vcorrea@aguabendita.com.co
P. (574) 6051846 EXT. 120
C. (57) 3154760033

**LATAM · EUROPE · ASIA
DANIEL PANESSO**

dpanesso@aguabendita.com.co
P. (574) 6051846 EXT. 120
C. (57) 3208411838

**COLOMBIA
NATALIA ARANGO**

narango@aguabendita.com.co
P. (574) 6051846 EXT. 120
C. (57) 3105082386



aguabenditasw



